

INFRARED THERMAL INSPECTION

THE EQUIPMENT



The specialist: John (JACK) N. Allinson, II. AMS[®]
President of J.N. ALLINSON ASSOCIATES, INC.
Certified Infrared Thermography
Accredited Marine Surveyor

The equipment: Digital Video Camera (left) Infrared Thermal Imaging camera (right) Heads Up video display mounted on eyeglasses.

The Cost:

Infrared Thermography Inspections Alone

Hourly rate **ONE HUNDRED FIFTY DOLLARS (\$150) US**. Minimum charge is one (1) hour, most inspections completed within two (2) hours. Report preparation one (1) hour.

- Daily rate within (1) hour driving of Jacksonville
SEVEN HUNDRED FIFTY (\$750) DOLLARS US.
- Daily rate when traveling further within (1) hour driving of Jacksonville
FIFTEEN HUNDRED (\$1,500) DOLLARS US plus expenses

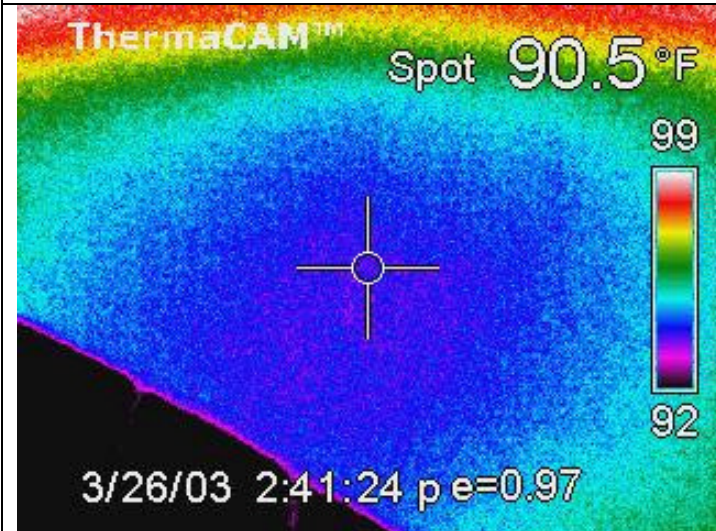
Infrared Thermography Inspections when coupled with Marine Survey.

Flat fee of **FOUR HUNDRED DOLLARS (\$400) US** added to the cost of the survey.

THE RESULTS

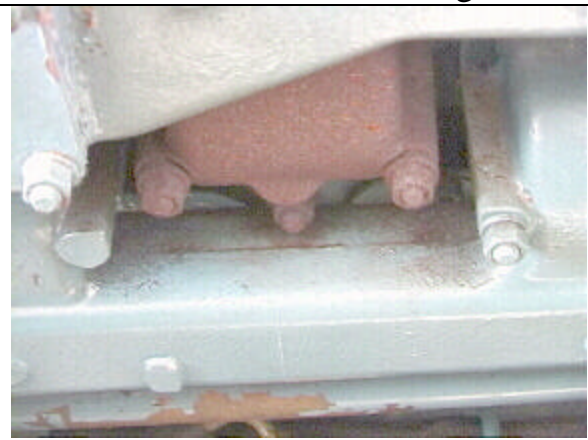
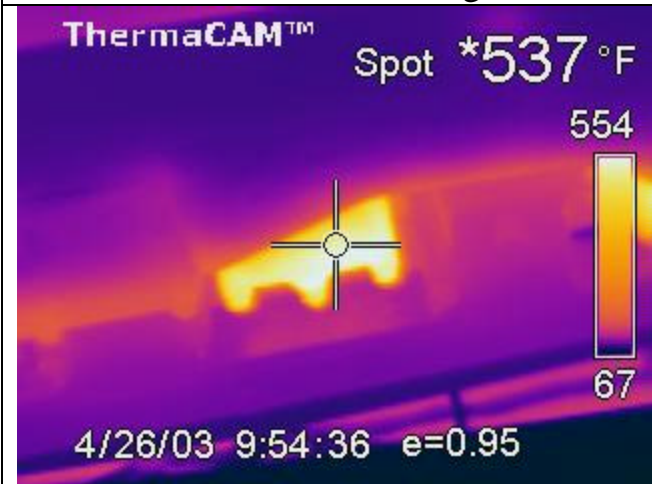
INFRARED IMAGE

NORMAL VIEW



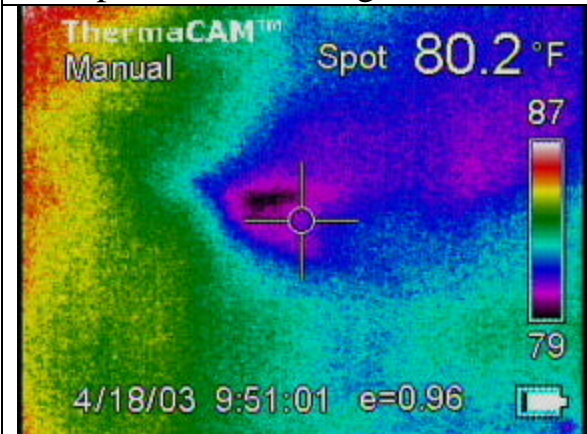
Moisture in the bow of a fiberglass boat.

Moisture in the bow of a fiberglass boat.



Hot spot on a diesel engine

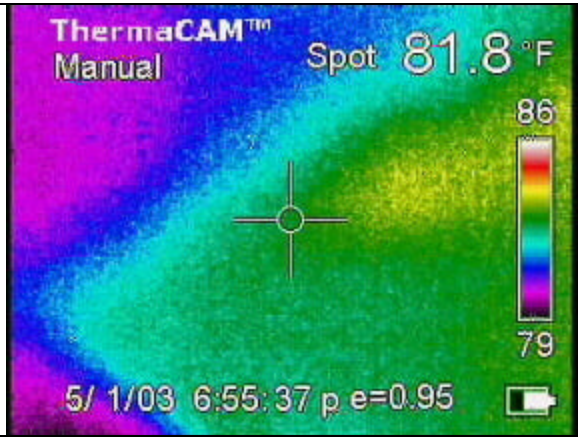
Hot spot on a diesel engine.



Moisture in the hull of a fiberglass boat.

Moisture in the hull of a fiberglass boat.

INFRARED IMAGE

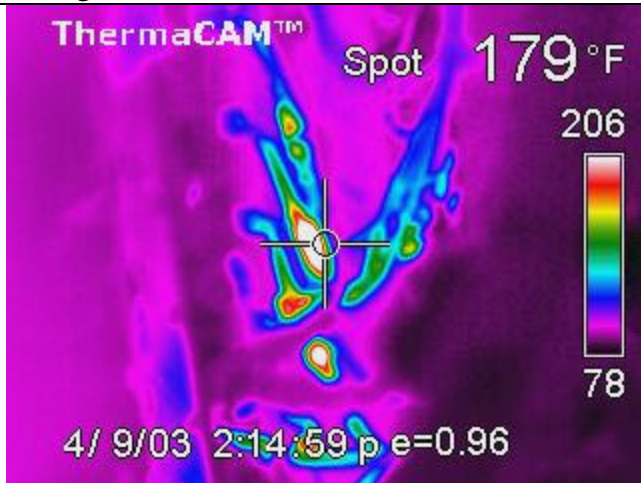


Delamination in the hull of a fiberglass boat.

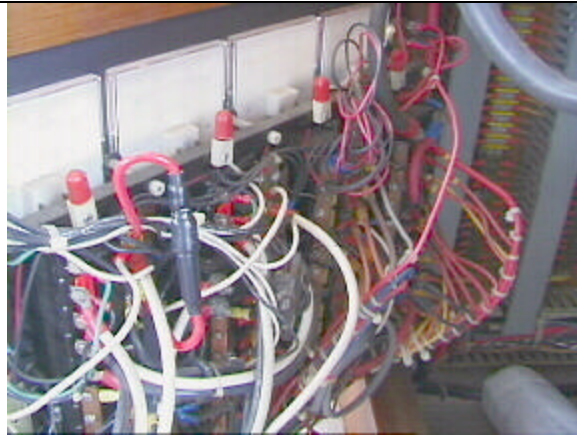
NORMAL VIEW



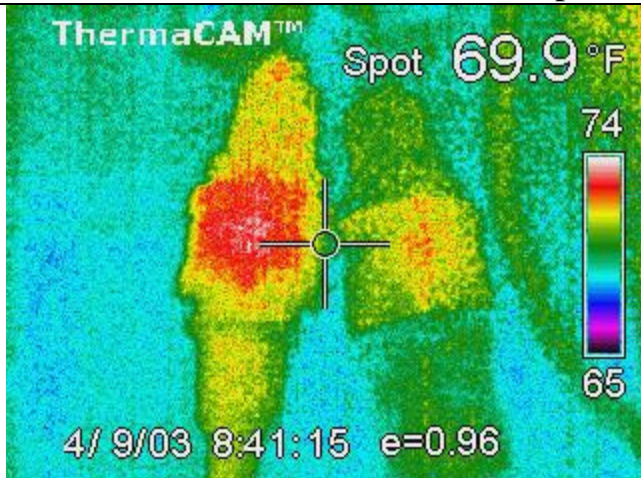
Delamination in the hull of a fiberglass boat.



View of hot wire in a boats electrical panel.



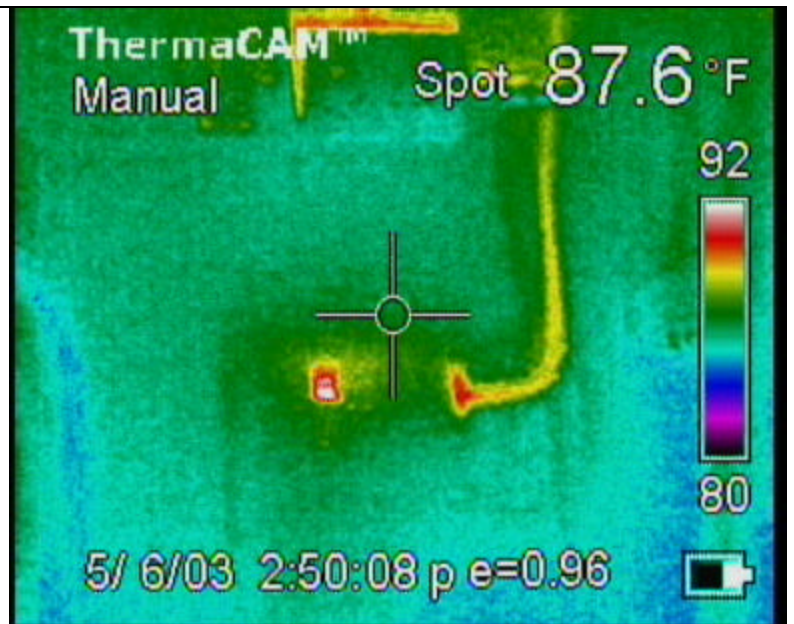
View of hot wire in a boats electrical panel.



View of electrical plug for shore power.



View of electrical plug for shore power.



Unaided view (left) and Infrared view (right) of a 12vDC fused terminal block. In the left photograph everything appears in order. There are no signs of burn or scorch marks on the wires and terminals. Same view using infrared (left) shows that there is a problem with the top fused terminal block. It appears that the fuse was not put in properly and the increased resistance is causing the fuse and wire at terminal to warm up.